

# Natural Resources Program



EPAC

March 6, 2012

Stephen Hofstetter

Program Supervisor



# Natural Resources Program

- *Mission:* To provide environmental planning, environmental review, and compliance and enforcement services to protect the natural resources of Alachua County.
- The Natural Resources Section staff implements the natural resource protection requirements of the Alachua County Unified Land Development Code (ULDC) and Comprehensive Plan and mandated under Chapter 163 and Chapter 125 Florida Statutes.



# What are our Regulated Natural Resources?

- Surface waters and buffers
- Wetlands and buffers
- 100-yr floodplain
- Listed species habitat
- Strategic ecosystems
- Significant geologic features
- Significant habitat
- Archaeological resources
- Special Area Study identified resources





# Natural Resources Program

- Development Review
  - (CPA, Zoning, DRI, DRC, PAS, BOA)
- Compliance & Enforcement
- Complaint/inquiry response
- Environmental planning
- Agency coordination
- Public education and outreach
- Site management, partnerships, special projects
- Resource impact tracking





# DEVELOPMENT REVIEW

- Comp Plan Amendments
- DRIs
- Zoning changes
- Land Development Regulations
- DRC (Site Plan Review)
- Pre-application Screening (PAS) for Adm Permits
- Board of Adjustments/Variances
- Habitat management grants





# Compliance & Enforcement

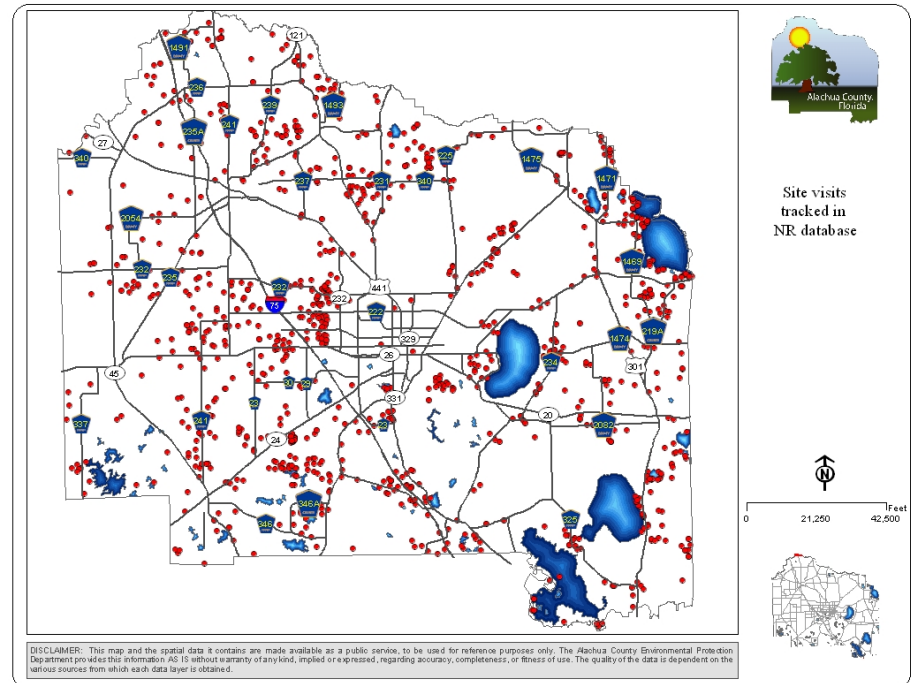
- Site Development Compliance
- Regulated Resource Violations
- Agency Coordination on regulations
- Deed and easement compliance
- Consent agreements
- Code Enforcement Board Hearings





# Complaint & Inquiry Response

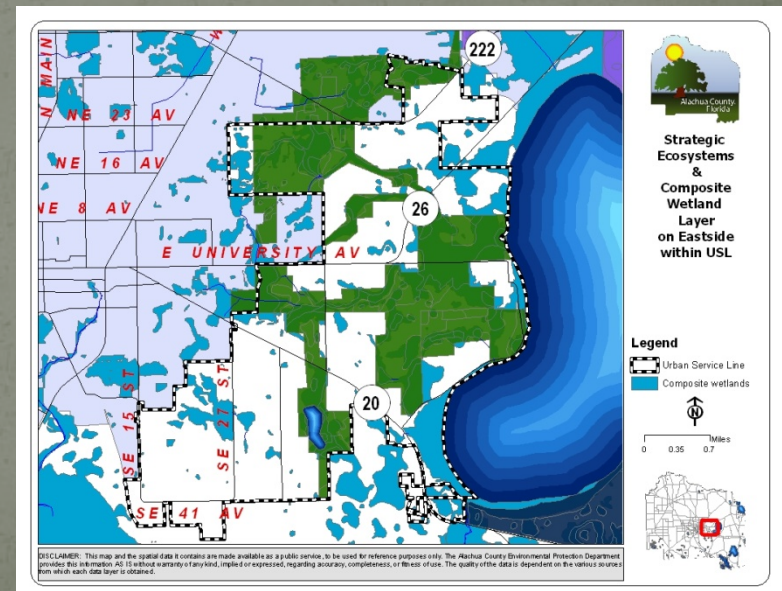
- Citizen Complaints
- Citizen Inquiries
- Agency Coordination and Inquiry
- Inter-Department Coordination





# Environmental Planning

- Large Scale Environmental Planning
- Agency Coordination
- Annexation Evaluations
- Comprehensive Plan Updates







# Public Education & Outreach

- Presentations to organizations, homeowner's associations, BANCF, schools, and other agencies
- Events and conferences
- Environmental grants
- Promotion of LID
- Fieldtrips
- Group mail-outs
- Website
- Quarterly reports



<b>Current Staffing (FY12)</b>	<b>Primary Tasks</b>
<b>Program Manager</b>	<b>Program manager/special projects &amp; coordination/CPA/ZAPS/planning</b>
<b>Full-time Senior Planner</b>	<b>CPA/DRI/ZAPS/DRC/coordination/ACF support</b>
<b>Part- time Senior Planner (0.5 FTE)</b>	<b>DRC/grants/outreach/website</b>
<b>2 Full-time Senior Env. Specialist</b>	<b>PAS/compliance/enforcement/sinkholes /inquiries</b>
<b>Part-time Senior Env. Spec. (0.6 FTE)</b>	<b>PAS/compliance/enforcement/BOA/ inquiries</b>
<b>Part-time GIS Specialist (0.35 FTE funded by NR program)</b>	<b>Department-wide GIS support</b>

# What about duplication?

## Regulated Resources Evaluated:

- Surface waters/Wetlands & buffers
- 100-yr floodplain
- Listed species habitat
- Strategic ecosystems
- Significant geologic features
- Significant habitat
- Archaeological resources
- Special Area Study identified resources



# What about duplication?

- Larger Surface waters & Wetland buffers
- Stronger wetlands avoidance policy
- Archaeological resources (first contact)

## Evaluated by County only:

- 100-yr floodplain
- Listed species habitat
- Strategic ecosystems
- Significant geologic features
- Significant habitat
- Special Area Study identified resources





# Questions?

- NR Program website:

<http://www.alachuacounty.us/Depts/EPD/NaturalResources/>

**Stephen Hofstetter**

EPD Natural Resources

[shofstetter@alachuacounty.us](mailto:shofstetter@alachuacounty.us)

(352) 264-6811



# Extra Slides



# Surface Waters, Wetlands, and Associated Buffers

Approach: Avoid first, minimize & mitigate if impacts are unavoidable

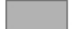




# Strategic Ecosystems



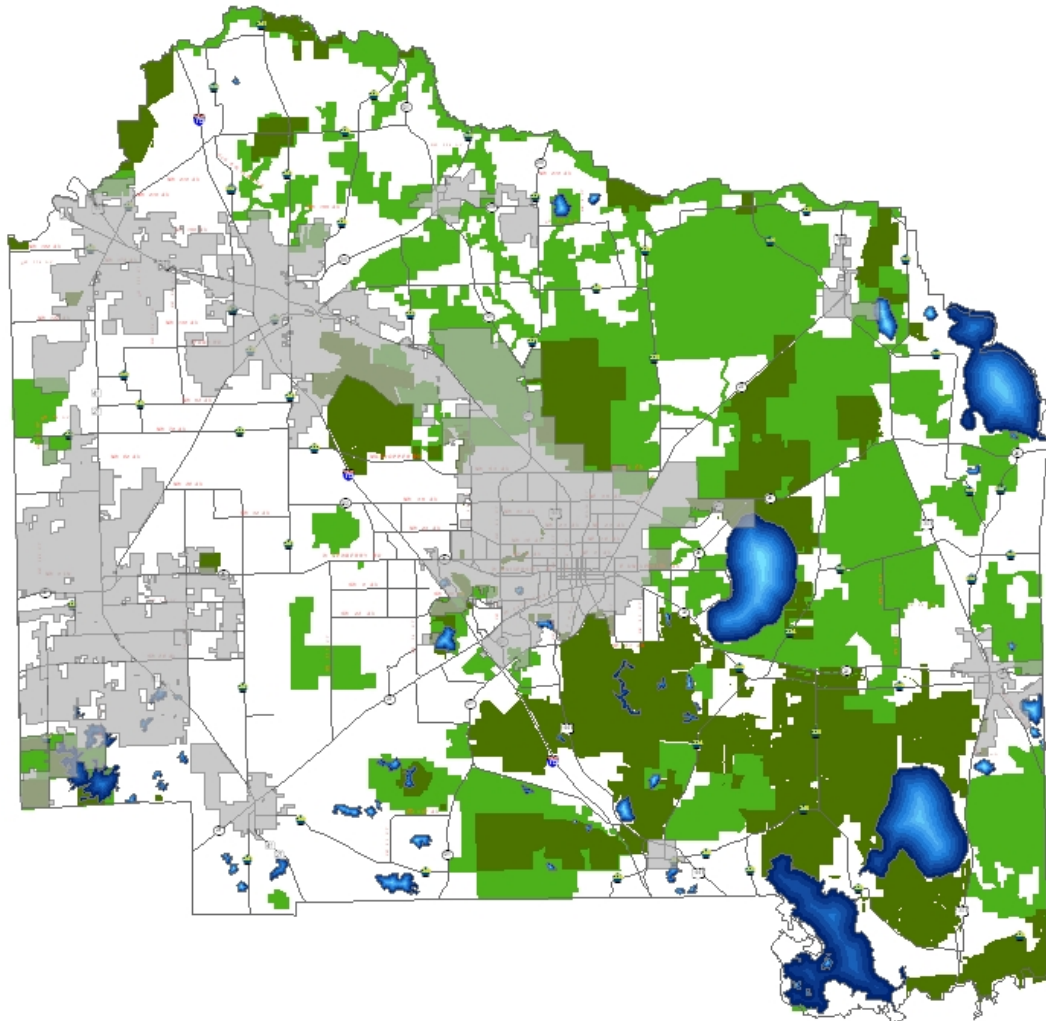
As of Sept. 2007

## Legend

-  City Boundaries
-  Conservation Lands
-  Strategic Ecosystems



0 24,500 49,000 Feet



DISCLAIMER: This map and the spatial data it contains are made available as a public service, to be used for reference purposes only. The Alachua County Environmental Protection Department provides this information AS IS without warranty of any kind, implied or expressed, regarding accuracy, completeness, or fitness of use. The quality of the data is dependent on the various sources from which each data layer is obtained.





# Listed species habitat & Significant habitat



Listed Species Habitat



Significant Habitat





# Significant geologic features & archaeological resources



Geological features



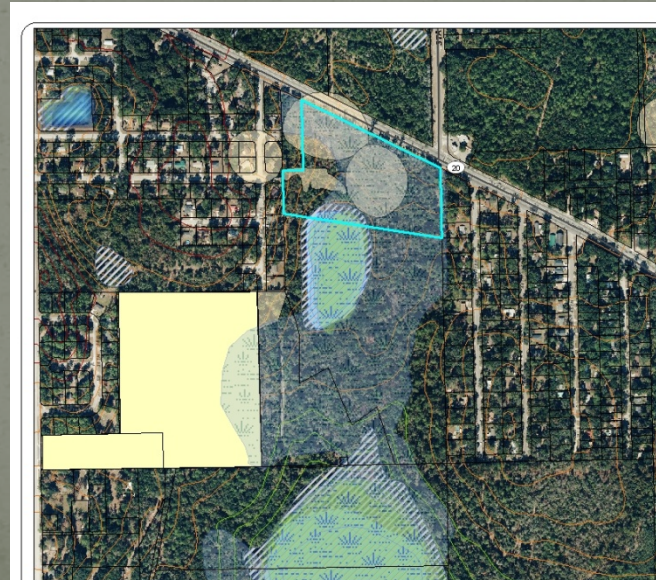
Archaeological &  
Historic resources



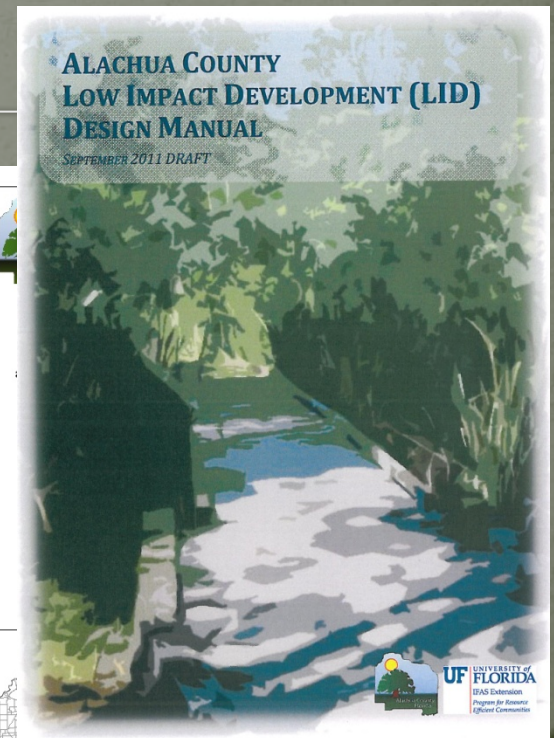


# Minimize impacts to regulated resources through project evaluation and design

Resource protection, open space, green infrastructure, Low Impact Development, minimizing and avoiding resources, ...

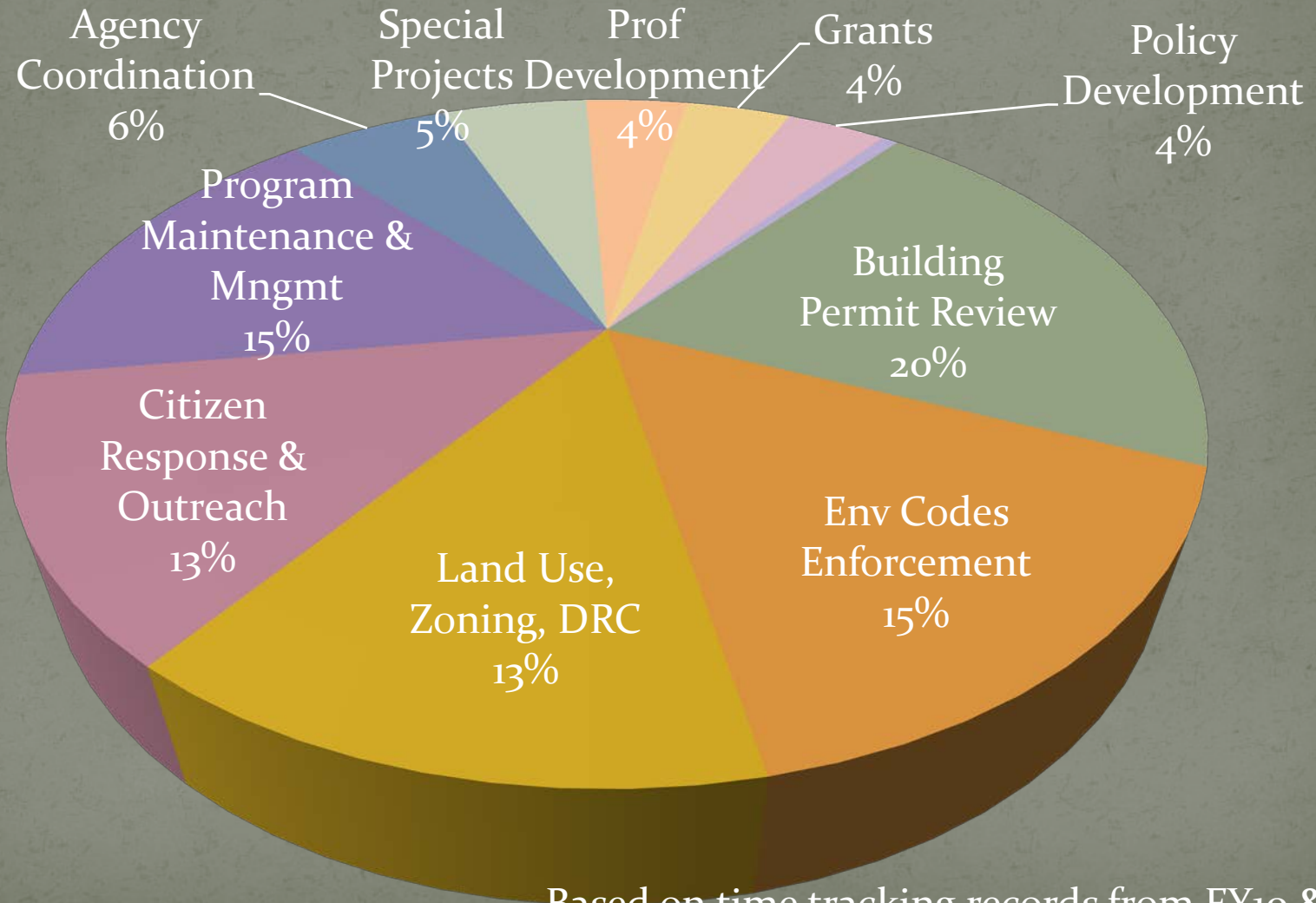


DISCLAIMER: This map and the spatial data it contains are made available as a public service, to be used for reference purposes only. The Alachua County Environmental Protection Department provides this information AS IS, without a warranty of any kind, implied or expressed, regarding accuracy, completeness, or fitness of use. The quality of the data is dependent on the various sources from which each data layer is obtained.





# Staff Workload by Task for FY10 & FY11



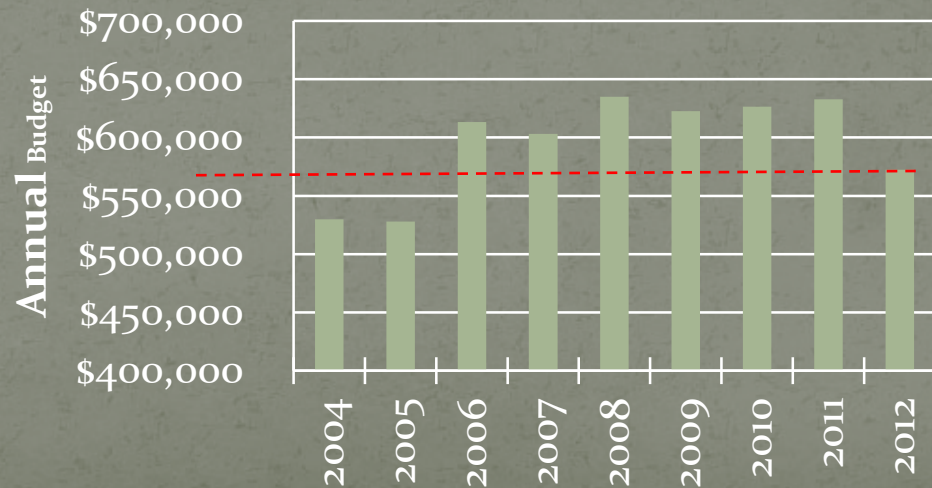
Based on time tracking records from FY10 & FY11



# Program Budget

FY	2004	2005	2006	2007	2008	2009	2010	2011	2012
MSTU	\$303,490	\$336,604	\$440,999	\$490,479	\$503,092	\$484,824	\$519,479	\$505,514	\$455,240
GF	\$144,205	\$119,517	\$122,437	\$126,310	\$131,092	\$137,824	\$149,521	\$137,286	\$117,282
<b>Total*</b>	<b>\$529,865</b>	<b>\$527,824</b>	<b>\$613,436</b>	<b>\$603,152</b>	<b>\$635,056</b>	<b>\$622,723</b>	<b>\$626,375</b>	<b>\$632,800</b>	<b>\$572,522</b>

## NR Program Total Budget





# NR Program Staffing

